

CTC ASP.NET WebForms Generator

Version 2.0.3

ReadMe

Table of Contents

| | |
|--|----|
| Prerequisites | 2 |
| Install Instructions..... | 2 |
| Uninstall Instructions | 3 |
| Getting Started..... | 3 |
| Installed Files..... | 4 |
| Restructure of generated application | 7 |
| AJAX Downloads and Configuration | 7 |
| ASP.NET 4.0 IIS Configuration | 7 |
| IIS 7 Configuration | 8 |
| CTC Generate Gateway Issue | 8 |
| Version History | 10 |

Prerequisites

The following software is required for running the CTC ASP.NET WebForms Generator version 2.0.3 and the generated user interface application.

Microsoft Software requirements:

- .NET 2.0 (including ASP.NET 2.0), .NET 3.5 (including ASP.NET 3.5) or .NET 4.0 (including ASP.NET 4.0)
Note: ASP.NET 4.0 requires Visual Studio 2010.
- IIS 5.0 or higher
- Visual Studio 2005, Visual Studio 2008 or Visual Studio 2010
- Internet Explorer 7 or higher

Optional

- Microsoft ASP.NET AJAX Extensions v1.0 for ASP.NET 2.0. This is required when configuring the CTC ASP.NET WebForms Generator for ASP.NET 2.0 AJAX. See the AJAX Downloads and Configuration section below for further instructions.
- Microsoft ASP.NET AJAX Control Toolkit version 1.0.20229 for ASP.NET 2.0 or Microsoft ASP.NET AJAX Control Toolkit for ASP.NET 3.5 and ASP.NET 4.0. This is required when using any of the ASP.NET AJAX Controls. See the AJAX Downloads and Configuration section below for further instructions.

Unisys Software requirements:

- EAE 3.3 with CE IC 3240 or higher with support for VS2005 and .NET 2.0.
 - Users of EAE 3.3 IC3260 or earlier, see CTC Software requirements below.
 - Users of EAE 3.3 IC3270 or later must be using CE 2.0 with the CE .NET Generate Environment enabled.

or

- AB Suite 1.2 IC 1450 or higher with CE 1.2

or

- AB Suite 2.0 with CE 2.0

CTC Software requirements:

- Users of EAE 3.3 IC 3260 or earlier must download and install the CTC Generate Gateway 1.0 software. The CTC Generate Gateway allows generators, such as the CTC generators, written in .NET and C# to be run from EAE Developer.

Install Instructions

Download the installation package

CTCASPNETWebFormsGeneratorSetupV2.0.3.zip to your computer and save.

Unzip and run the installation package and follow the instructions to install this release.

When generating a new bundle for the first time, all infrastructure files required will automatically be copied to the bundle views directory.

When upgrading from a previous version of the generator and local changes have been made to any of the generator infrastructure files, ensure you have a recent backup before installing the new version, as the generator infrastructure files may have changed.

When generating a bundle for the first time after upgrading to a newer version of the generator, all infrastructure files that have been changed since last release, will automatically be copied to the bundle views directory. If local changes have been made to any of the infrastructure files of the bundle, ensure you have a recent backup before generating the bundle.

Administrator privileges are required for installing the software.

Depending on the anti-virus software being used, it may be necessary to disable the anti-virus software while installing the generator.

Uninstall Instructions

Uninstall this package from Control Panel/Add or Remove Programs, select "CTC ASP.NET WebForms Generator 2.0.3" and follow the instructions.

If you have made changes to any of the infrastructure files or the sample Custom Controls project, ensure you have a recent backup of these files before you uninstall the CTC ASP.NET WebForms Generator.

Getting Started

To start the generator, setup a bundle in EAE 3.3 or a folder in AB Suite for Component Enabler and specify "**CTCASPNETWebFormsGenerate.dll**" as the name of the generator. For further instructions on how to setup a bundle/folder for Component Enabler, please refer to the **Component Enabler User Guide** or the **CTC ASP.NET WebForms Generator** documentation.

When building the folder/bundle from the AB Suite Developer it is recommended the 'Rebuild' option is always chosen, in order to ensure the configuration setting of the CTC Generator takes effect on all specs in the folder/bundle.

When performing partial builds (i.e. using the Build option rather than the Rebuild option) from AB Suite Developer, certain methods on the User Interface generator are not invoked by the AB Suite build environment. This means, the CTC Silverlight Generator is not able to automatically reset IIS and compile the generated solution. In this case, the MSBuildSolution.bat file, located in the views directory of the generated bundle, must be run manually.

When starting the generator for the first time a dialog prompting for a License Key will open. Cut and paste the License Key received from CTC exactly as received into the dialog. The License Key can also be entered using the CTC Configurator.

To configure the generator, start the **CTC Configurator** from the desktop shortcut created during the installation of the generator or from the Start Menu/All Programs/CTC Software/CTC Configurator 2.0.2.

To start the generated ASP.NET WebForms User Interface Application, open the browser and enter the URL of the application. The URL which is created by default by the generator is:

http://[MachineName]/[ApplicationName]_[BundleName]/default.aspx (i.e. http://localhost/Sample_Inquiry/default.aspx).

To request a License Key from CTC, start the CTC Configurator, navigate to 'Help/How To Obtain a License Key...' and follow the instructions.

This release provides support for ASP.NET 2.0, ASP.NET 3.5, ASP.NET 4.0, Visual Studio 2005, Visual Studio 2008 and Visual Studio 2010. Existing bundles will continue to be generated for the ASP.NET and Visual Studio versions they were originally created for. When creating a new bundle, the generator defaults to ASP.NET 3.5 and Visual Studio 2008. This can be changed using the CTC Configurator and setting the ASP.NET and Visual Studio Version properties to the appropriate values.

Installed Files

The following directories and files are installed:

[CEROOT]

- Bin
 - CTCASPNETWebFormCustomControls.dll
 - CTCASPNETWebFormInfrastructureFiles.xml
 - CTCASPNETWebFormsConfigurator.chm
 - CTCASPNETWebFormsConfigurator.dll
 - CTCASPNETWebFormsGenerate.dll
 - CTCASPNETWebFormStandardControls.dll
 - CTCASPNETWebFormStandardControls.xml

- CTCCConfigurator.chm
- CTCCConfigurator.exe
- CTCGeneratorConfig.xml
- CTC-Software
 - CTC ASP.NET WebForms Generator
 - CustomControls
 - AssemblyInfo.cs
 - CalendarExtender-AJAX.cs
 - CTCASPNETWebFormCustomControls.csproj
 - DataListControl.cs
 - DataListControl-AJAX.cs
 - DatePicker.cs
 - DatePicker-AJAX.cs
 - FilteredTextBoxExtender-AJAX.cs
 - GridViewControl.cs
 - GridViewControl-AJAX.cs
 - MaskedEditExtender-AJAX.cs
 - NumericUpDownExtender-AJAX.cs
 - SliderExtender-AJAX.cs
 - TextBoxWatermarkExtender-AJAX.cs
 - Documentation
 - CTC ASP.NET WebForms Configurator Help.pdf
 - CTC ASP.NET WebForms Generator Help.pdf
 - CTC ASP.NET WebForms Generator ReadMe.pdf
 - Views
 - ASPNETApplication
 - ASPNETViews
 - Lang
 - ConsoleFS.htm
 - ConsoleIn.aspx - .aspx.cs –
aspx.designer.cs
 - ConsoleOut.aspx - .aspx.cs –
aspx.designer.cs
 - Fatalerr.aspx - .aspx.cs –
aspx.designer.cs
 - IspecList.xml
 - IspecView.ascx.custom.cs
 - Language.ascx - .ascx.cs –
ascx.designer.cs
 - MultiErr.aspx - .aspx.cs –
aspx.designer.cs
 - SelectIspec.ascx - .ascx.cs –
ascx.designer.cs
 - ASPNET-Views-VS2005-20-AJAX.csproj
 - ASPNET-Views-VS2005-20-Standard.csproj
 - ASPNET-Views-VS2005-35.csproj
 - ASPNET-Views-VS2008-20-AJAX.csproj
 - ASPNET-Views-VS2008-20-Standard.csproj
 - ASPNET-Views-VS2008-35.csproj
 - ASPNET-Views-VS2010-20-AJAX.csproj
 - ASPNET-Views-VS2010-20-Standard.csproj
 - ASPNET-Views-VS2010-35.csproj
 - ASPNET-Views-VS2010-40.csproj

- Close.ascx - .ascx.cs – ascx.designer.cs
 - CTCCustomControls.cs
 - DatePicker.ascx - .ascx.cs – ascx.designer.cs
 - SessionErr.aspx - .aspx.cs – aspx.designer.cs
 - TimeOut.ascx - .ascx.cs – ascx.designer.cs
 - Bin
 - CTCASPNETComboBox.dll
 - CTCASPNETContextMenu.dll
 - CTCASPNETStandardControlsRunTime.dll
 - CTCASPNETStandardControlsRunTime.xml
 - CTCASPNETWebFormCustomControls.dll
 - CTCASPNETViewController.dll
 - CTCASPNETViewController.xml
 - Images
 - blank.gif
 - calendar.gif
 - calendarIcon.gif
 - wait_BigFlower.gif
 - ASPNET-App-VS2005-20-AJAX.csproj
 - ASPNET-App-VS2005-20-Standard.csproj
 - ASPNET-App-VS2005-35.csproj
 - ASPNET-App-VS2008-20-AJAX.csproj
 - ASPNET-App-VS2008-20-Standard.csproj
 - ASPNET-App-VS2008-35.csproj
 - ASPNET-App-VS2010-20-AJAX.csproj
 - ASPNET-App-VS2010-20-Standard.csproj
 - ASPNET-App-VS2010-35.csproj
 - ASPNET-App-VS2010-40.csproj
 - BrowserClose.aspx - .aspx.cs – aspx.designer.cs
 - CTCStyleSheet-AJAX.css
 - CTCStyleSheet- Standard.css
 - Default-AJAX.aspx - .aspx.cs – aspx.designer.cs
 - Default- Standard.aspx - .aspx.cs – aspx.designer.cs
 - ErrorStrings.cs
 - Global.asax - .asax.cs
 - KeepSessionAlive.aspx - .aspx.cs – aspx.designer.cs
 - Login.ascx - .ascx.cs – ascx.designer.cs
 - ViewControllerCommonScript.js - .Debug.js
 - Web-20-AJAX.config
 - Web-20-Standard.config
 - Web-35.config
 - Web-40.config
 - ASPNETWeb-VS2005.sln
 - ASPNETWeb-VS2008.sln
 - ASPNETWeb-VS2010.sln
 - DeploySolution.bat
 - MSBuildSolution-20.bat
 - MSBuildSolution-35.bat
 - MSBuildSolution-40.bat
- CTC Configurator
 - CTC Configurator Framework Help.pdf

Restructure of generated application

The folder structure of the generated application has been changed with release 2.0.3.2/3 to make it easier to navigate and find individual files. This means user of the CTC ASP.NET WebForms Generator prior to this version must delete all files and folders within the views directory of the bundle before running the generator. Failure to do this will result in a mismatch of old and new folder structure and can lead to errors.

AJAX Downloads and Configuration

The Microsoft ASP.NET AJAX Extensions v1.0 for ASP.NET 2.0 is downloaded from the official Microsoft ASP.NET Site. Go to this link <http://www.asp.net/ajax/downloads/> and choose "Download ASP.NET Extension v1.0". To install the AJAX Extensions v1.0:

- 1) Run the downloaded ASPAJAXExtSetup.msi file
- 2) Configure the bundles you wish to generate as AJAX enabled. Start the CTC Configurator, add the 'ASPNETVersion' option to the bundle node and select 'ASP.NET 2.0 AJAX'.

Microsoft ASP.NET AJAX Extensions for ASP.NET 3.5 and ASP.NET 4.0 are included with .NET 3.5 and .NET 4.0 and therefore there is no separate download for this.

The Microsoft ASP.NET AJAX Control Toolkit downloaded from the official Microsoft ASP.NET Site. Go to this link <http://www.asp.net/ajax/ajaxcontroltoolkit/> and choose "AJAX Control Toolkit". To install the Ajax Control Toolkit:

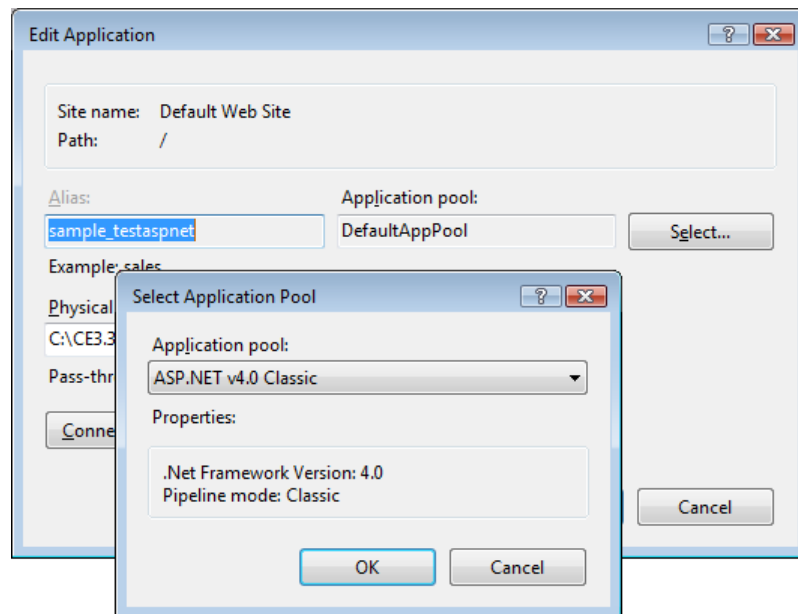
- 1) Unzip the downloaded zip file to a folder of your choice.
- 2) Configure the CTC ASP.NET WebForms Generator to specify the location of the AjaxControlToolkit.dll. Start the CTC Configurator, add the 'ASPNETAJAXControlToolkitLocation' option to the generator node and specify the location of the dll, e.g.: [AJAX Control Toolkit Folder]\SampleWebSite\Bin\AjaxControlToolkit.dll.

ASP.NET 4.0 IIS Configuration

When generating the user interface application for ASP.NET 4.0, the following error may occur when opening the application in the browser:

*Server Error in '/sample_testaspnet' Application.
Could not load file or assembly 'sample_testaspnet_App' or one of its dependencies. This assembly is built by a runtime newer than the currently loaded runtime and cannot be loaded.*

The likely cause for this error is the virtual directory for the application is not configured for ASP.NET 4.0. Open IIS Manager and configure the Application pool for ASP.NET 4.0 Classic as shown below:



IIS 7 Configuration

When using IIS 7, the CTC ASP.NET WebForms Generator requires the IIS 6 Management Compatibility Component to be installed in order for the generator to set up the virtual directory for the generated solution.

To install the IIS 6 Management Compatibility Components by using the Windows vista Control Panel:

1. Click **Start**, click **Control Panel**, click **Programs and Features**, and then click **Turn Windows features on or off**.
2. Open **Internet Information Services**.
3. Open **Web Management Tools**.
4. Open **IIS 6 Management Compatibility**.
5. Select the check box for **IIS 6 Metabase and IIS 6 configuration compatibility**.
6. Select the checkbox for **IIS 6 Management Console**.
7. Click **OK**.

CTC Generate Gateway Issue

Upgrading the CE environment de-installs the CTC Generate Gateway interface causing the CTC ASP.NET WebForms Generator to stop working when running the generator from EAE 3.3. It is therefore required to re-install the CTC

Generate Gateway after upgrading the CE environment. Re-run the CTC
Generate Gateway Installer Package and select the 'Repair' option.

Version History

| | | |
|--------|--------------|--|
| V1.0.0 | 28/Jan/2008 | Initial Release |
| V1.0.1 | 22/Feb/2008 | Single pushbutton in AB Suite with no data field associated caused unhandled exception. |
| | | 'Enabled' property added to Control Substitutions and Control Specifications. This provides a convenient way of removing a control substitution and a control specification from the generate process without deleting the item. |
| | | Updates to the Context Menu. <ul style="list-style-type: none">• Multi Level Sub Menu capability added.• Flexible design time styling capability added.• Quick pick ispec context sub menu example added to the Default.aspx page. |
| | | Updates to the Configurator. <ul style="list-style-type: none">• Capabilities for moving and copying nodes in the configuration tree.• Drag and Drop of configuration nodes added.• Cut, Copy and Paste of configuration nodes added. |
| V2.0 | 14/July/2008 | AJAX enabled the CTC ASP.NET WebForms Generator. The generator supports both AJAX and the standard ASP.NET. <ul style="list-style-type: none">• 'ASPNETVersion' option added to the configuration allowing easy selection of AJAX or the standard ASP.NET for a bundle.• CE Webform Renderer has been enhanced to support both AJAX and the standard ASP.NET.• The CTC ComboBox has been enhanced to support both AJAX and the standard ASP.NET. |
| | | Support included for the Microsoft ASP.NET AJAX Control Toolkit providing a range of new controls for generating and delivering rich user |

| | | |
|--|--|---|
| | | interfaces. |
| | | 12 custom controls included with the CTC ASP.NET WebForms Generator of which 9 take advantage of AJAX and the Microsoft ASP.NET AJAX Control Toolkit. |
| | | Context Menu enhanced to allow the creation of true context menu. <ul style="list-style-type: none"> • New events added that occur when context menu is requested from the browser user, allowing the application to create menu items reflecting the actual context. • Context Menu is only created and sent to the browser when requested by the browser user. |
| | | Configuration of applications, bundles, ispecs and fields enhanced to provide dropdown list allowing easy selection of available applications, bundles, ispecs and fields. |
| | | Preview of ASP.NET Controls added to the Properties/Specification Editor. This allows a user to preview the effect of properties while configuring ASP.NET Controls. |
| | | Added feature that disables the User Interface when the browser user submits a form until a response has been received from the server. <ul style="list-style-type: none"> • This prevents the user from double-submitting the forms/transactions. • When submitting, the cursor changes to the wait icon providing immediate feedback to the user. • When submitting, an image can be displayed informing the user that the transaction is being processed. |
| | | Added 'CustomCodeModuleCreate' and 'CustomCodeModuleRemove' options. This allows a user to add a module to all or selected ispecs in which custom code can be added, to perform special actions such as setting properties on controls depending on values returned from the host system, and validating input from the browser user before transmitting the data to the host system. |
| | | 'RemoveControl' option added to Control |

| | | |
|--------|-----------------|---|
| | | Specifications to remove a control from the form and exclude it from being generated. |
| | | 'IISReset' option added. When set, the generator resets (Stop and Start) IIS before generating Ispec Models files. This avoids errors occurring during the generation of the Ispec Model files caused by IIS locking Ispec Models files that have previously been accessed. |
| | | Full 30 day evaluation version available. Restrictions previously found in the 30 day evaluation license have been removed. Any number of ispecs can be included in a bundle and the watermark on the forms has been removed. |
| V2.0.1 | 30/October/2008 | Option for generating a CopyFrom region as a Table has been added. |
| | | Custom Control for creating charts using the WebChart control from Component Art has been added. |
| | | Issue when generating from AB Suite and the bundle includes an ispec with no presentation has been fixed. |
| | | Configurator user interface has been enhanced for configuring Fields. When configuring a field, the presentation of the field as it is painted will automatically be suggested by default. |
| | | Configurator user interface has been enhanced for configuring Control Substitutions. When configuring a control substitution, the dropdown selection of controls to substitute with contains only controls that are possible substitutions for the selected control. |
| | | Copy list data to Clipboard in Excel format has been added. When the user right clicks on a ListBox, GridView, DataList, CopyFrom Table or CopyFrom control, an item "Copy To Clipboard, Excel format" will be added to the context menu that appears. Subsequently, when selecting this item from the context menu, the data from the list will be copied to the clipboard as a tab separated list. The |

| | | |
|--------|--------------|---|
| | | <p>content on the clipboard can then be pasted into an excel spreadsheet.</p> <p>This is implemented in the default.aspx.cs file and can be further customized to suit local requirements.</p> |
| | | <p>Support for Visual Studio 2008 and .NET Framework 3.5 has been added.</p> <p>An option, 'Visual Studio Version', has been added to the configuration of a bundle allowing a bundle to be generated for VS2005 or VS2008.</p> <p>The existing option, 'ASP.NET Version' has been updated allowing generating a bundle for 'ASP.NET 3.5 Standard' or 'ASP.NET 3.5 AJAX' in addition to the existing ASP.NET 2.0 choices.</p> |
| V2.0.2 | 7/April/2010 | <p>Font substitution option has been added to the Configurator.</p> <p>This allows to easily substituting fonts painted on the controls to fonts more suitable for a web application.</p> |
| | | <p>Enhanced algorithm for calculating position and size of controls to match the painted forms.</p> |
| | | <p>XScalingFactor and YScalingFactor options have been added.</p> <p>XScalingFactor allows specifying a scaling factor for increasing/decreasing the left position and width of controls.</p> <p>YScalingFactor allows specifying a scaling factor for increasing/decreasing the top position and height of controls.</p> |
| | | <p>Additional MatchOnField expressions have been added.</p> <p>The following predefined expressions has been added:</p> <ul style="list-style-type: none"> - Field Name - Field Length |

| | | |
|--|--|--|
| | | <ul style="list-style-type: none"> - Field Design Time Value - IsLabel - IsButton - IsRadioButton - IsCheckBox - IsListBox - IsComboBox - IsImage - IsPanel - IsIspecForm - IsTeachForm |
| | | <p>AlternateViewCreate and AlternateViewRemove options have been added.</p> <p>AlternateViewCreate creates an initial copy of the generated ispec view allowing using external tools such as the Visual Studio WebForm's painter to paint an alternate view of the ispec.</p> <p>AlternateViewRemove removes an alternate view previously created from the generated solution.</p> |
| | | <p>The login user control has been enhanced to allow using login with AutoConnect as well as CustomConnect.</p> |
| | | <p>Support for automatic upgrading existing bundles when installing a new version of the generator has been added.</p> <p>When generating a bundle with a new version of the generator, infrastructure files that have changed will automatically be copied to the bundle output directory. In addition, a list of infrastructure files that have changed will be displayed.</p> |
| | | <p>DefaultDateFormat option for specifying the default format of dates (UK, US or International) to be used by Date Controls has been added.</p> |
| | | <p>Added ExcludeTeachScreen option, which when set will exclude teach screens from the generate process.</p> |

| | | |
|------------|-------------------|--|
| | | Added Description property to the Control Specifications allowing the user to enter a short description of the specifications. |
| | | Updated installation script to allow installing the generator on 64 bit OS. |
| | | Added CopyFromMultiLineAsSingle option that allows generating a CopyFrom spanning multiple lines as single lines. |
| V2.0.2.2/3 | 18/Nov/2010 | Additional trace information has been added to the ASPNet-CEWFR.log file |
| V2.0.2.4/5 | 17/Dec/2010 | Fixed issue with multiple DatePicker controls on the same form causing the controls to clear the value. |
| V2.0.3.0/1 | 7/January/2011 | CTC ASP.NET WebForms Generator upgrade to be qualified with ASP.NET 4.0 and Visual Studio 2010. |
| | | <p>Enhanced the CTC Configurator to manage Multi Configuration Files.</p> <p>The Multi Configuration Files feature is activated when using the SaveAs function or the Import function the first time.</p> <p>When activating the Multi Configuration feature, a catalog of configuration files will be maintained in the CTCGeneratorConfigCatalog.xml file located in [ceroot]\bin.</p> |
| V2.0.3.2/3 | 16/September/2011 | Enhanced the folder structure of the generated ASP.NET application to make it easier to navigate and find the files. |
| | | |